



2025 Summer Cruise Guide

Saturday, June 07 to Sunday, June 15

General Guidance

Communications

Channel 78 is our working VHF radio channel.

Bill Zimmerman on Mystic Star will host the directed net each morning at 0800. The directed net begins with a roll call so please let Bill know if you leave the fleet or expect to join at a later time. As we might be making activity changes “on the fly” this year, your participation is even more important than ever. Remember to use low power unless you are in a different area than the rest of the fleet.

Flag Etiquette

During the cruise it's often helpful to easily identify fellow cruise boats from a distance using flags. The US Ensign is flown from the stern of all vessels. For sailboats additional flags are flown from the starboard spreader in the following order if available: Cruise pennant, USPS Ensign, WSPS Burgee, Officer Flag. For power vessels, USPS Ensign— suitable place on starboard, WSPS Burgee—bow staff or below USPS Ensign on starboard.

Rafting

Tips and raft-up assignments are included on Page 20.

Pre-cruise Activities

Friday, June 6 - Rock Hall MD

8:00 PM - \$20 - Mainstay Music Hall -Live Music with Joe Holt (piano) and Owner Matt Mielnick singing a program he has titled “All the Songs I Ever Wanted to Sing, But Never Had the Chance.”

Limited Tickets still available - book on your own <https://mainstayrockhall.org/shows/>
410-639-9133

Saturday June 7 - Rock Hall MD

1:00 PM - Free - Selkie Bookstore - Mystery Book and Scavenger Event
Wine, cheese, \$50 door prize and local authors Margaret and Ken Scheck
6202 Rock Hall Rd, Rock Hall, MD
selkiebooksrh@yahoo.com
480-430-4692

Route Waypoints

Below are the GPS coordinates for the route. You may want to take time before Sunday morning to program them into your chart plotter. An OpenCPN GPX file is available for download at: <http://abc-wilmington.com/Cruise/2025/OpenCPN.gpx>

Date	Location	WPT	Type	Lat/Lon	Dist to WPT
6/7	Northpoint Marina	Start	Destination	39° 07.92'N 076° 14.88'W	0.0
6/8	Rock Hall	1	Approach	39° 07.72'N 076° 14.93'W	0.2
	Wye River	2	Approach	38° 50.58'N 076° 12.74'W	17.9
	Shaw Bay	3	Destination	38° 51.34'N 076° 11.05'W	2.2
6/9	Wye River	4	Approach	38° 50.58'N 076° 12.74'W	2.2
	South River	5	Approach	38° 54.07'N 076° 28.70'W	16.6
	Almshouse Creek	6	Destination	38° 56.40'N 076° 32.82'W	4.4
6/10	South River	7	Approach	38° 54.07'N 076° 28.70'W	4.4
	Annapolis	8	Approach	38° 58.05'N 076° 28.24'W	6.9
	Port Annapolis Marina	9	Destination	38° 57.82'N 076° 28.86'W	0.6
6/11	Annapolis	10	Approach	38° 58.05'N 076° 28.24'W	0.6
	Magothy River	11	Approach	39° 3.33'N 076° 25.88'W	9.2

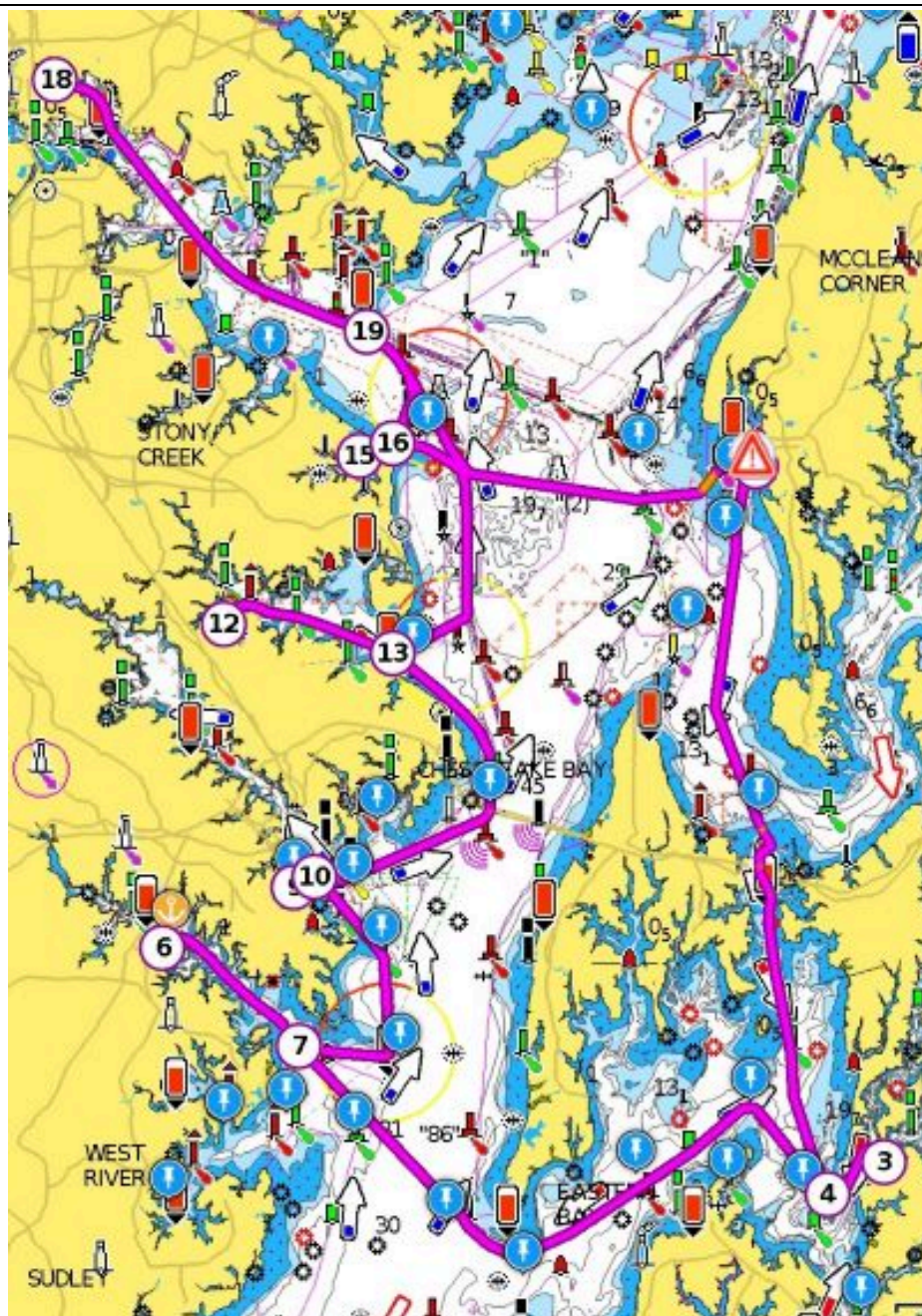
	Dividing Creek	12	Destination	39° 04.01'N 076° 30.99'W	4.5
6/12	Magothy River	13	Approach	39° 3.33'N 076° 25.88'W	4.5
	Bodkin Creek	14	Approach	39° 08.25'N 076° 25.89'W	7.2
	Back Creek	15	Destination	39° 07.95'N 076° 26.89'W	0.9
6/13	Bodkin Creek	16	Approach	39° 08.25'N 076° 25.89'W	0.9
	Baltimore	17	Approach	39° 10.87'N 076° 26.65'W	3.1
	Harbor East Marina	18	Destination	39° 16.78'N 076° 36.07'W	9.8
6/15	Baltimore	19	Approach	39° 10.87'N 076° 26.65'W	9.8
	Rock Hall	20	Approach	39° 07.72'N 076° 14.93'W	11.2
	Northpoint Marina	End	Destination	39° 07.92'N 076° 14.88'W	0.2

Itinerary

THE CHARTS BELOW PROVIDE ASSISTANCE FOR NAVIGATION AND ARE DESIGNED TO FACILITATE THE USE OF OFFICIAL NAUTICAL CHARTS AND NOT TO REPLACE THEM. ONLY OFFICIAL NAUTICAL CHARTS AND NOTICES FOR NAVIGATORS CONTAIN ALL THE INFORMATION NECESSARY FOR SAFE NAVIGATION AND, AS ALWAYS, THE CAPTAIN IS RESPONSIBLE FOR PROPER USE OF SAME.

Date/Destination	Dist. (nm)	Type	Time	Activity
June 07 - 15 Overview	116			

This chart represents an overview of the cruise. The GPS coordinates are the approach and destination waypoints from the table above. At each destination, a mini-route is provided which starts at the approach waypoint and proceeds into the anchorage or marina. The mini routes are drawn from the in-bound perspective; follow them in reverse to depart. Please note the approach waypoints are all used twice and the WPT number of the second use obscures the first in the image below. For example, for Shaw Bay, WPT 2 is used on the way in and WPT 4, with the same lat/lon, on the way out, but only WPT 4 can be seen.



Date/Destination	Dist. (nm)	Type	Time	Activity
Saturday, June 07	N/A	Marina	1600 1800	Commander's Kick-off Picnic
North Point Marina Rock Hall, MD VHF 16/72 410.639.2907	0.0			Contact Person: Jean Marie Bailey 610.787.0517 Theme: "Fiesta Like There's No Mañana" BYO food and drinks to the Marina Pavilion. Grills are available for your use. Comments by Commander John Bailey. Commander's cocktail: Special Punch Cruise Committee to provide a Cruise Overview, Trivia Contest Presentation, Distribution of Activity Literature, and Q&A

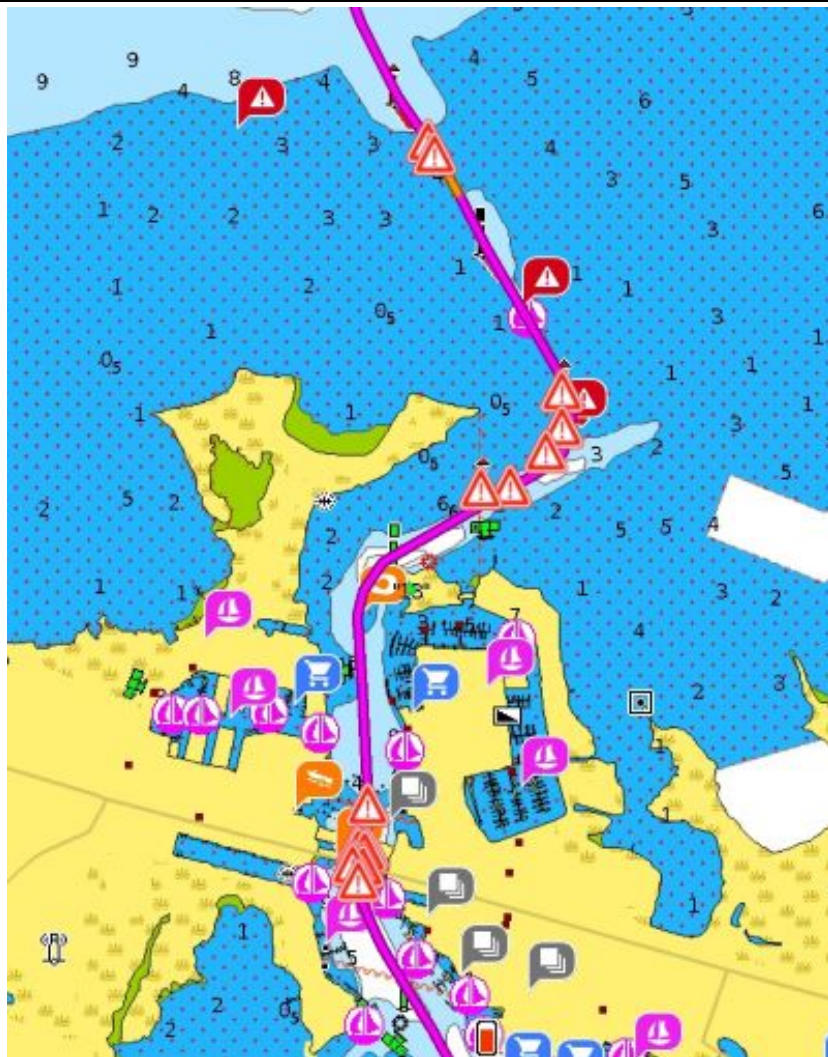


For any boaters who are not permanent slip holders at Northpoint, this mini-route begins outside of the harbor just south of Rock Hall Harbor Entrance Buoy Green #1 and ends at the North Point fuel dock. The approach channel on old raster NOAA charts is shown too far north. Keep the Rock Hall Entrance Buoy Green #1 and Green #3 well to your port to find the deepest water.

Date/Destination	Dist. (nm)	Type	Time	Activity
Sunday, June 08	20.3 (35.6)	Anchor	0800 1500 1800	Radio Net Assigned Raft-ups Shared Dinner
Shaw Bay - Wye River			1800	Contact Person: Carol Hanson 484.678.6894 Host Boat responsible to coordinate <u>shared dinner</u> menu

Depart - Exit Rock Hall Harbor. We will then sail/steam south about 18 miles, first entering the mouth of the Chester River, then passing through Kent Narrows into Eastern Bay. Note: The Rock Hall Triathlon is scheduled for the weekend before the cruise so there should be no interference this year.

At Kent Narrows, low tide is predicted at 1137 at 0.7 ft and high tide at 1600 is only 1.1 ft. The north channel has been marked with smaller buoys in the past to mark shoaling. We will attempt to get current shoaling information, but deeper draft boats may want to go outside of Kent Island to avoid the narrows. The distance outside is about 35.6 nm.



Date/Destination	Dist. (nm)	Type	Time	Activity
------------------	---------------	------	------	----------

Approach - Proceed south to the entrance of the Wye River passing east of the large shoal marked by the "Wye River Warning Daybeacon A."

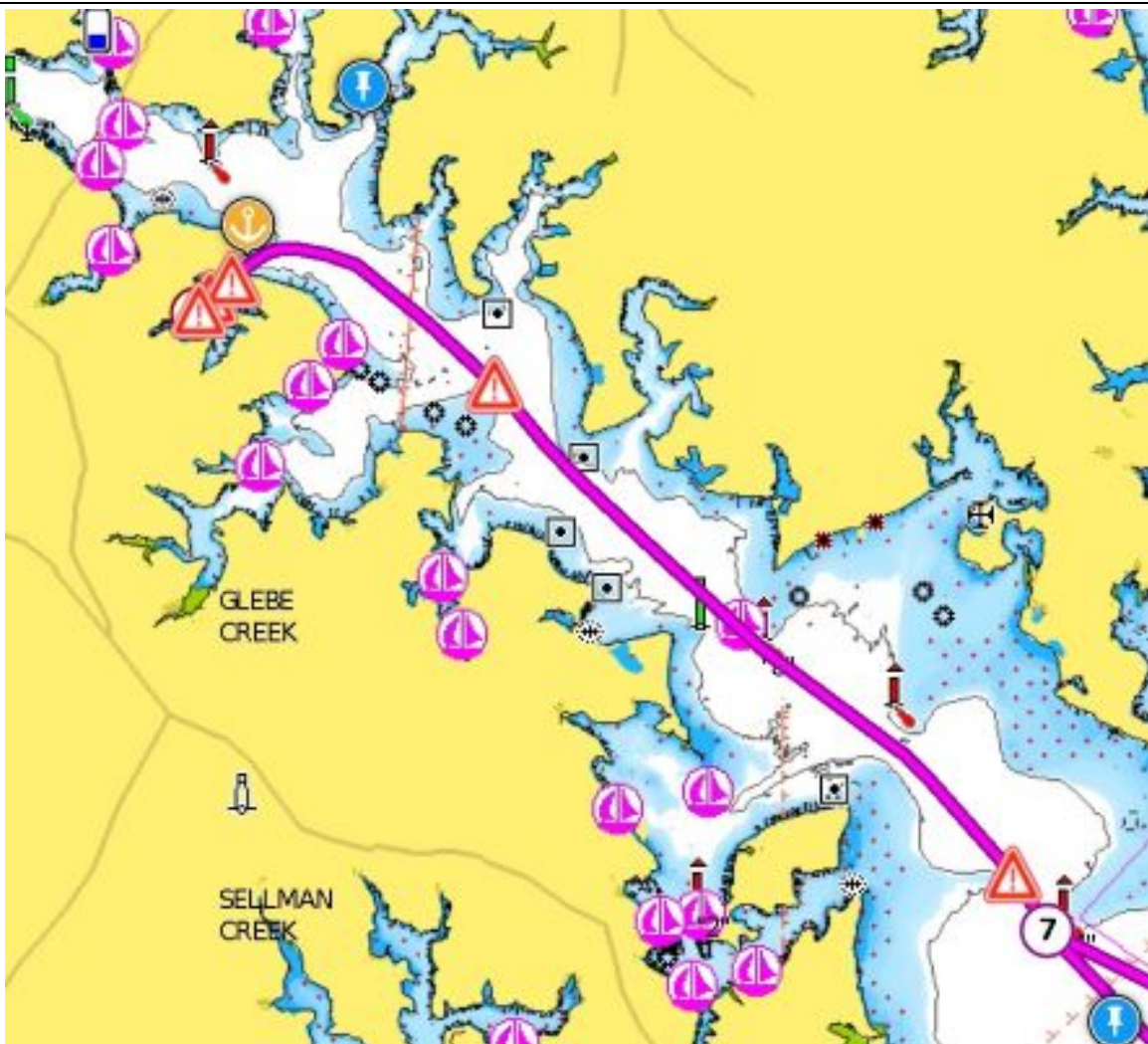
Final - Turn NNE and sail about 2.2 miles to the entrance of Shaw Bay. The mini-route below shows the way into Shaw Bay. Raft-up Assignments and guidance appear on Page 21.

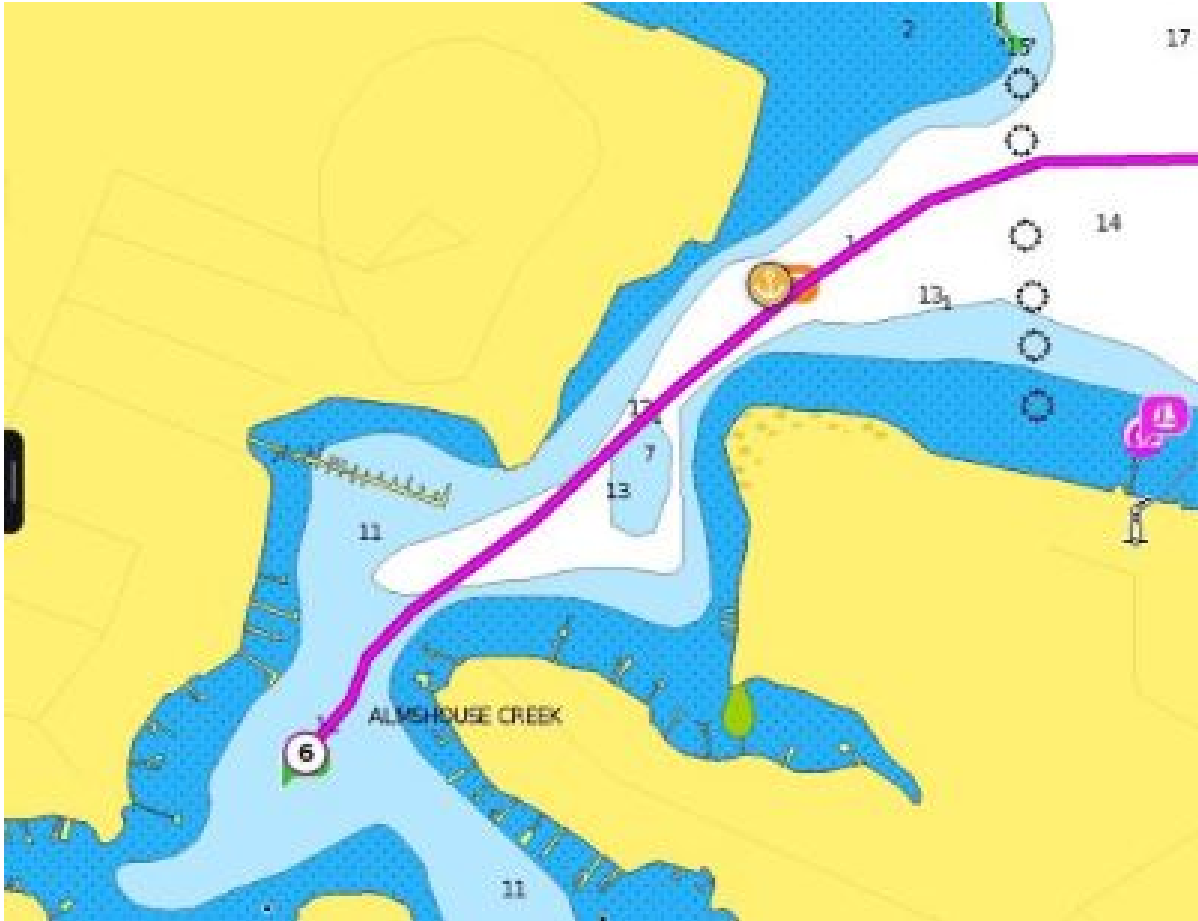


Date/Destination	Dist. (nm)	Type	Time	Activity
Monday, June 09	23.2	Anchor	0800 1300 1430 1530 1800 1900	Radio Net Assigned Raft-ups Tour of London Town & Gardens Riverkeeper Presentation Dinner on your own Trivia Contest
Almshouse Creek - South River				

Approach - Sail out of Shaw Bay using the reverse of the previous day's track to the mouth of the Wye River at Eastern Bay. Turn NNW and sail about 3 miles to round Tilghman Point to port, then SW about 7 miles to the mouth of Eastern Bay, rounding Bloody Point on your starboard side, then turn NW for about 10 miles straight into the South River on the Western shore of the Chesapeake.

Final - Continue NW up the South River for about 4 miles. Look for "South River Light 11," a Green beacon with flashing green light marking the shoal off Cedar Point. Continue past SR 11 and Glebe Creek then enter Almshouse Creek, the next creek on the South bank.



Date/Destination	Dist. (nm)	Type	Time	Activity
Detail of Almshouse Creek				
				
Assigned Raft-ups			1300	See list on Page 21
Shore Activity			1430	Tour & Riverkeeper Presentation Contact Person: Bruce Wyngaard We will dinghy to the dock at Historic London Town & Gardens for a tour followed by a presentation by Elle Bassett, the South, West, and Rhode Riverkeeper.
Dinner			1800	On your own
Nautical Trivia Contest - Round 1			1900	Contact Person: Joan Barber 610-322-1605 See rules on Page 21


Date/Destination	Dist. (nm)	Type	Time	Activity
Tuesday, June 10	11.9	Marina	0800 1200 1300 1400 1700	Radio Net Marina Check-in Maritime Museum Shuttle Annapolis Maritime Museum Tour Dinner on your own
Port Annapolis Marina			1200	VHF - 16 410-269-1990

Approach - Depart Almshouse Creek to the ENE to the South River, then sail SE about 4 miles to the Bay, then another 1.6 miles E rounding Thomas Point Light on Port, then turning N for 2.5 miles, then NNW 2.5 miles to the entrance of Back Creek.

Final - Back Creek is loaded with docks and moorings. Carefully proceed WSW then SW about 0.6 miles to Port Annapolis.



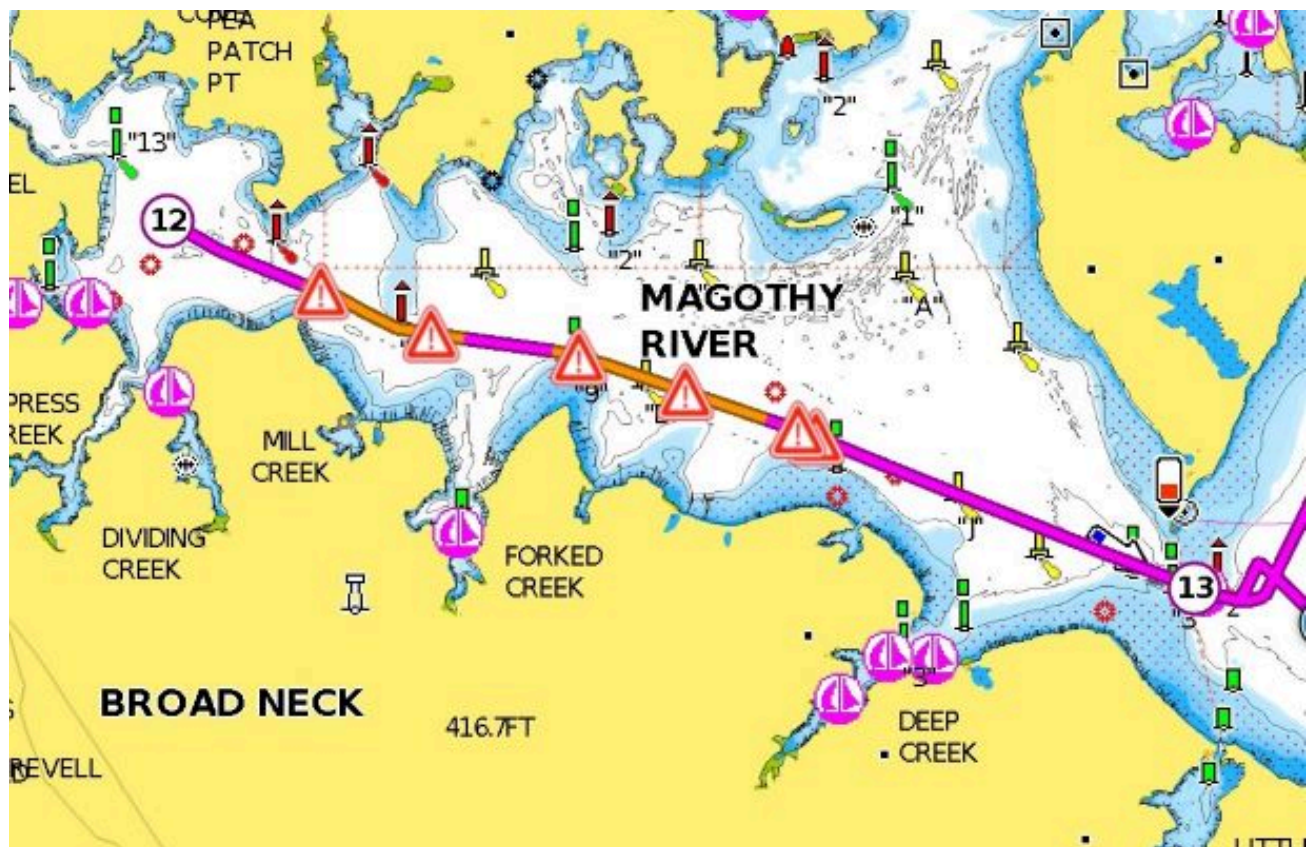
On the next page is the Dock Map for Port Annapolis Marina

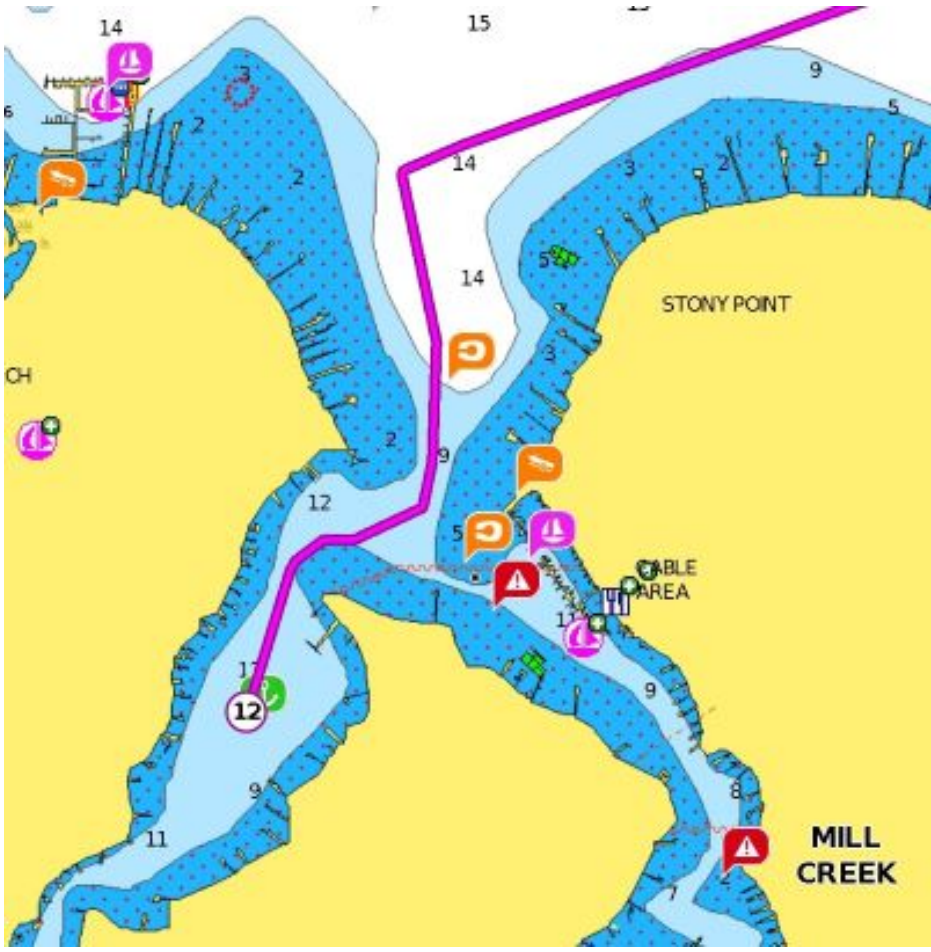
Date/Destination	Dist. (nm)	Type	Time	Activity
Annapolis Maritime Museum			1300	
				<p>Contact Person: Carol Hanson 723 Second St, Annapolis, MD 21403. The first free shuttle leaves the marina at 1300 for the Museum and returns at the end of the tour. Tour starts at 1400. You may skip the return shuttle based on your dinner plans. Water taxis are available to and from the downtown, museum and near the marina - \$6.50</p>

Date/Destination	Dist. (nm)	Type	Time	Activity
Wednesday, June 11	13.8	Anchor	0800 1200 1500 1600 1800 1900	Radio Net Marina Check-out Assigned Raft-ups Dinghy Activity Dinner on your own Trivia Contest Round 2
Dividing Creek, Magothy River				

Approach - Depart Back Creek towards the NE to reach the Severn River. Sail E for one mile, then ENE toward the Bay Bridge for 3.4 miles. Remember to take steps to manage magnetic disturbance when passing under the bridge. Then, proceed NNW/NW about 4 miles to the mouth of the Magothy.

Final - Enter the Magothy going WNW about 4 miles then favor the South shore to find the narrow entrance to Dividing Creek just past Stoney Point. More details below.



Date/Destination	Dist. (nm)	Type	Time	Activity
<p>Final (continued) - Look for uncharted lateral markers to help stay in the deep water. You should see two white markers to limit speed to 6 kts, then another white marker on the west side marking the shoal. When you reach the Mill Creek/Dividing Creek split, look for a red nun to guide you West to Dividing Creek by keeping it close to starboard while making a 90 degree turn to the West. Stay close to the private docks on the West side to avoid shoaling to the East. Once in the anchorage, you should see 12 ft of depth. If this entrance proves too difficult, we may shift the anchorage to the Magothy, just outside of the Creek.</p>				
				
Dinghy Activity			1600	
Dinner at "The Point"			1800	Optional dinner at this quirky dockside place. The marina next to the restaurant charges \$15 per dinghy tie up. You can put your name on a waitlist via Yelp. Recommended by locals. Wine Wednesday's - 1/2 Price Bottles Of House Wine! Every Wednesday, Open To Close!
Nautical Trivia Contest - Round 2			1900	Contact Person: Joan Barber 610-322-1605 See rules on Page 21

Date/Destination	Dist. (nm)	Type	Time	Activity
Thursday, June 12	12.6	Anchor	0800 1200 1300 1800 1900	Radio Net Assigned Raft-up Hancock's Resolution Tour Dinner on your own Trivia Contest Round 3
Bodkin Creek				

Approach - Sail out to the mouth of the Magothy then NE then N about 7 miles to the mouth of the Patapsco River. Just inside on the South, look for the entrance to Bodkin Creek.

Final - The Bodkin Creek entrance is 7' deep, but narrow. Follow the lateral markers carefully. Once inside, favor the North side of the creek to the Back Creek Inlet. Beware of unmarked shallow water at the entrance to Back Creek on the north bank that extends to half-way across.



Hancock's Resolution Tour			1300	Contact Person: Bruce Wyngaard 614-309-2325 We will dinghy to the dock behind the building.
Nautical Trivia Contest - Round 3			1900	Contact Person: Joan Barber 610-322-1605 See rules on Page 21

Date/Destination	Dist. (nm)	Type	Time	Activity
Friday, June 13	13.8	Marina	0800 1200 1800	Radio Net Marina Check-in Dinner on your own
Harbor East Marina, Baltimore, MD			1200	VHF 16/68 410-625-1700

Approach - Depart Back Creek/Bodkin Creek the same way you came in.

Final - At the Patapsco River turn NNW for 2-½ nm, then WNW for 3 miles, then 5 miles NW to reach the city of Baltimore. Beware of commercial traffic in this busy waterway. When you reach Northwest Harbor Lighted Buoy 2NH, favor the north side to enter Northwest Harbor passing Fort McHenry to port. Continued below.



Date/Destination	Dist. (nm)	Type	Time	Activity
------------------	---------------	------	------	----------

Continue NW until you have the Domino Sugar sign off your port quarter. When you pass Baltimore Inner Harbor Buoy 4 (red nun) the Harbor East Marina will appear to the north at the base of the Legg Mason building. At this point you are about ½ mile from the end of the Inner Harbor to the NW.



Boats arrive Friday and depart on Sunday, June 15. There are dozens of activities within walking distance of the marina. The city offers 4 free downtown bus routes. The harbor taxi (fee) has a pick up near the marina and stops at about 7 other harbor locations. For ideas on what to do, see the website: baltimore.org ph. 877-225-8466

Saturday, June 14	0	Marina	0800 1800	Radio Net End-of-Cruise Banquet
End-of-Cruise Banquet			1800	Contact Person: Leslie Brower Harbor East Marina Tent 40 International Dr. Baltimore, MD

Date/Destination	Dist. (nm)	Type	Time	Activity
Sunday, June 15	21.2	Marina	800 1100 1300	Radio Net Marina Checkout End of Cruise
North Point Marina, Rock Hall, MD				

Depart Harbor East Marina and sail down the Patapsco the reverse of the way you came in on Friday. When you reach the Bay, proceed on a course of 111°_M about 8 miles to the Swan Creek Bar. Aim for the Swan Point Channel North Range Rear light. We have successfully crossed the bar at low tide with our 5' draft. The tide predicted on 6/15 at 1300 is 1.31 ft and falling. Otherwise proceed south to the end of the bar at Swan Creek Green #3.



Participants

Boats	Captain	Type	LOA	Crew/Guests
Brio	Bruce Wyngaard	Sail	41	Leslie Brower
Mystic Star	Bill Zimmerman	Sail	46	Donna Zimmerman Richard Butler Terry Butler
Novus	John Bailey	Sail	38	Jean Marie Bailey
Pleasure's Mine	Bart Wilson	Sail	36	Beverly Wilson Steve Wilson
San Souci	John O'Reilly	Sail	32	None
Scrimshaw	John Schleicher	Sail	40	Colleen Schleicher Kathy Hauty
Skylark	Bill Barber	Sail	47	Joan Barber Peter Weintraub Gail Weintraub
Star Reacher	Scott Mayhew	Sail	40	Kathy Mayhew
Weatherly	Dennis Wallace	Sail	37	Carol Hanson

Raft-Up Assignments

Bolded boats are host boats

Host boats have the additional responsibilities to:

1. contact their Shaw Bay, June 8 raft-up guests **before the cruise** to coordinate the shared dinner menu, and
2. keep and report the Trivia Contest scores.

Rafting Tips

Host boats should plan to arrive and anchor early. Call your host boat on Channel 16 or 78 to see which side they want you to tie up on. Have fenders placed on the opposite side of your boat (e.g., your starboard side for their port side) and have four lines (bow, stern and two spring lines) ready with your end secured to a cleat and the other end ready to pass to the host boat. Approach slowly and be prepared to pass lines as you come alongside. Move fore or aft as needed to avoid aligning the masts for possible spreader impact if it gets rolly. The host boat captain will determine if any or all of the boats on the raft may stay for the night or if the raft will break up and should inform others well before dark. Always be prepared to anchor independently.

Shaw Bay, Sunday, June 8

Mystic Star - Pleasures Mine, San Souci (8)
Skylark - Brio, Novus (8)
Star Reacher – Scrimshaw, Weatherly (7)

Almshouse Creek, Monday, June 9

Mystic Star – Brio, Weatherly (8)
Skylark – Pleasures Mine, Scrimshaw (10)
Star Reacher – Novus, San Souci (5)

Dividing Creek, Wednesday, June 11

Mystic Star – Scrimshaw (7)
Skylark - San Souci, Weatherly (7)
Star Reacher – Brio, Pleasures Mine (7)

Bodkin Creek, Thursday, June 12

Brio – San Souci, Scrimshaw (6)
Mystic Star – Star Reacher, Weatherly (8)
Skylark – Pleasures Mine (7)

Nautical Trivia Contest

This year, we planned a Trivia Contest to be conducted in three sessions corresponding to three of the raft-ups.

Each Host Captain will be provided a question sheet with 25 questions and answers in a sealed envelope. One member of the raft-up group will be assigned to be the reader and only they will see the answers. The questions will be read in turn and the rest of the group may discuss openly to arrive at a consensus answer. The reader, being satisfied that the group is done, will read the correct answer and award the group one point for each correctly answered question. All disputes will be resolved by the host boat captain. Each boat in the raft-up group will receive the same score. The host boat captain will report the score at the next morning's radio net. In subsequent raft-ups, the same will be repeated with different boat groupings so that, by the end of the cruise, each boat will have a unique score.

Boat	Round 1 Score	Round 2 Score	Round 3 Score	Total
	_____ out of 25	_____ out of 25	_____ out of 25	_____ out of 75
Brio				
Mystic Star				
Novus				
Pleasure's Mine				
San Souci				
Scrimshaw				
Skylark				
Star Reacher				
Weatherly				